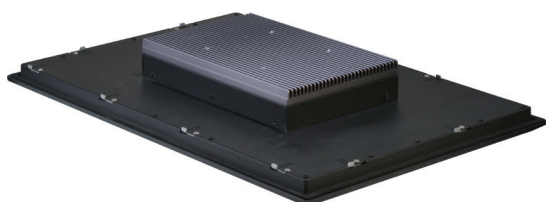
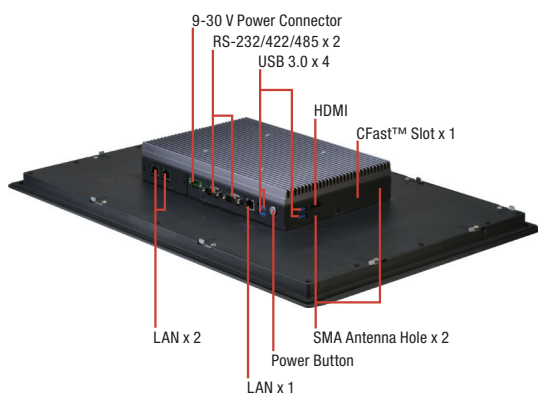
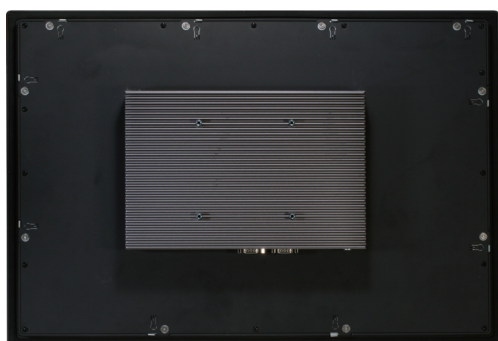


21.5" All-In-One Fanless Touch Panel PC with Intel® Core™ i-U Series Processor SoC



Features

- 21.5" FHD (1920 x 1080) Color TFT LCD Display
- Intel® Core™ i5-6300U/ Celeron® Processor SoC
- Projected Capacitive Multi-Touch
- IP65 Front Bezel Design
- Aluminum Design
- Fanless Operation
- VESA 100/Panel Mount Support
- DC 9~30V with Power Protection

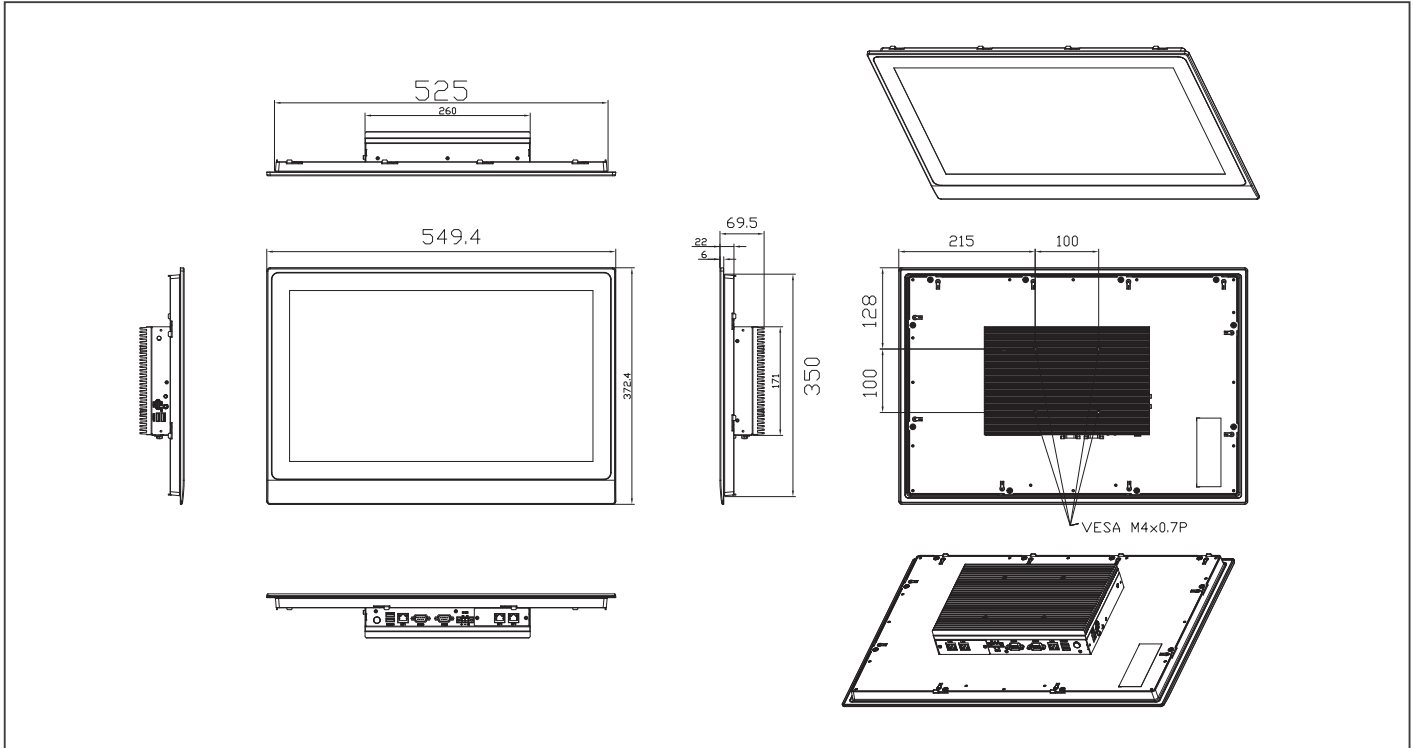


Specifications

System	
Processor	Intel® Core™ i5-6300U ,2.4 GHz
System Memory	260-pin DDR4 SODIMM x 1, Max. 16 GB
LCD/CRT Controller	Intergrate in processor
Ethernet	10/100/1000Base-TX, RJ-45 x 3
I/O Port	Type A USB 3.0 x 4 DB-9 RS-232/422/485 x 2 SMA Antenna hole x 1 HDMI x 1 RJ45 Type 10/100/1000Base-TX x 3 3-pin terminal block Power Input x 1 LED Power on/off switch x1 (Power on = Orange, Power off =N/A)
Storage Disk Drive	SATA 2.5" HDD bay x 1
Expansion Slot	Mini card x 1 SIM card x 1
OS support	Windows® 8.1, Windows® 10 (64 bit), Linux Kernel 2.6.x or higher
Mechanical	
Construction	IP65 Aluminum Design
Mounting	VESA 100/Panel Mount/Stand
Dimension	21.65" x 14.69" x 2.76" (550mm x 373mm x 70mm)
Carton Dimension	26.38" x 7.87" x 20.67" (670mm x 200mm x 525mm)
Gross Weight	20.02 lb (9.1 kg)
Environmental	
Operating Temperature	-4°F ~ 140°F (-20°C ~ 60°C) with 0.5 m/s airflow (CF & HDD)
Storage Temperature	-4°F ~ 158°F (-20°C ~ 70°C)
Storage Humidity	90% @40°C; non-condensing
Vibration	1 Grms/ 5~ 500Hz/ operation – with HDD
Shock	15 G peak acceleration (11 msec. duration) – with HDD
EMC	CE/FCC class A
Power Supply	
DC input	DC 9 (min.) ~ 30 (max.) V w/3-pin terminal block, ATX Power function
LCD	
Display Type	21.5" TFT-LCD
Max Resolution	1920 x 1080
Max. Colors	16.7M (8 bit/color)
Luminance	250 cd/m ²
Viewing Angle	178°(H), 178°(V)
Back Light	LED
Back Light MTBF (Hours)	50,000
Touchscreen	
Type	P-CAP/ 5-wire resistive
Light Transmission	>90%

Dimension

Unit: mm



Ordering Information

Part Number	Display Type	Max Resolution	Luminance	View Angle	Backlight MTBF	CPU	LAN	USB 3.0	USB 2.0	RS-232	RS-232/422/485	Storage	RAM	Display	Expansion	Mounting	Power	Temp.	Touch
OMNI-5215HTT-SKU-A1-1010	21.5" TFT-LCD	1920 x 1080	250 cd/m ²	178(H) / 178(V)	50,000	Intel® Celeron® i5-6300U, 2 GHz	3	4	0	—	2	2.5" SATA HDD	Support DDR4, up to 16GB	HDMI x 1	Full size mini card x 1	Panel, VESA 100	DC 9~30V	-4°F ~ 140°F (-20°C ~ 60°C)(w/ airflow)	Resistive Touch Screen
OMNI-5215HTT-SKU-A3-1010	21.5" TFT-LCD	1920 x 1080	250 cd/m ²	178(H) / 178(V)	50,000	Intel® Celeron® i5-6300U, 2 GHz	3	4	0	—	2	2.5" SATA HDD	Support DDR4, up to 16GB	HDMI x 1	Full size mini card x 1	Panel, VESA 100	DC 9~30V	-4°F ~ 140°F (-20°C ~ 60°C)(w/ airflow)	PCAP T/S

Note: *RAM not included.

*This All-In-One Panel PC not support OMNI I/O modules.

Packing List

- Phoenix Power Connector
- Product DVD
- OMNI-5215-SKU

Optional Accessories

- **AP-OT9789LA1000**
LCD monitor Stand 230mm, LA-100
 - **1702031802**
Power Cord (US Type)
 - **1702031803**
Power Cord (European Type)
 - **170203180E**
Power Cord (Japanese Type)
 - **1255900841**
12V 84W Power Adapter w/ 3pin Terminal Block
- *AAEON suggest users to adopt wide operation temperature RAM or HDD devices.